

Hazard, Risk and Prediction Figures

Stefan Hergarten

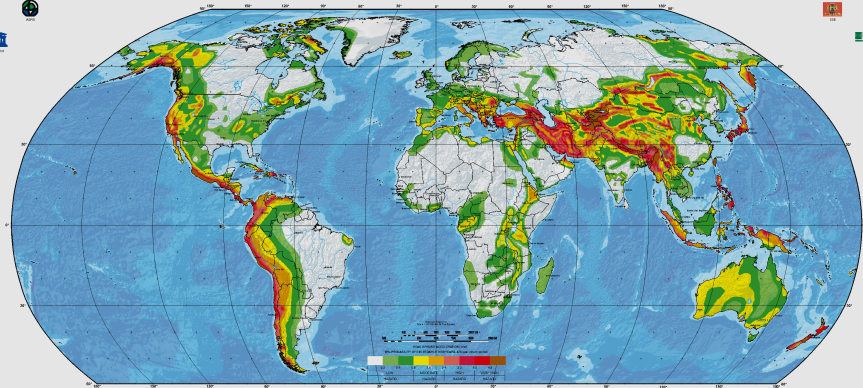
Institut für Geo- und Umweltnaturwissenschaften
Albert-Ludwigs-Universität Freiburg



Worldwide Earthquake Hazard

GLOBAL SEISMIC HAZARD MAP

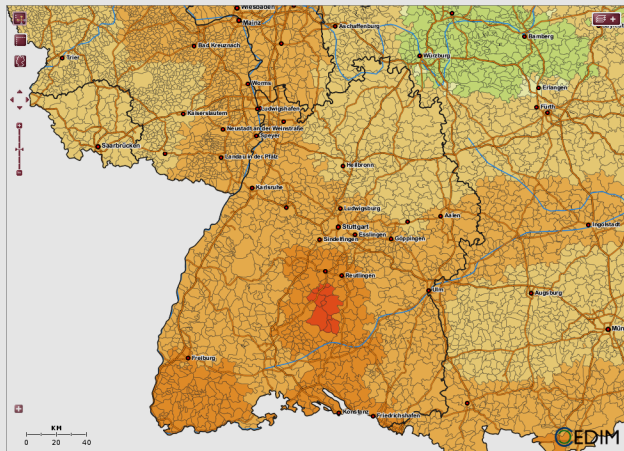
Produced by the Global Seismic Hazard Assessment Program (GSHAP),
a demonstration project of the UN International Decade of Natural Disaster Reduction, conducted by the International Lithosphere Program.
Global map assembled by G. Gökçöl, D. Grünthal, K. Steedock, and P. Zhang
1999



Source: Global Seismic Hazard Assessment Program

Regional Earthquake Hazard

CEDIM Risk Explorer



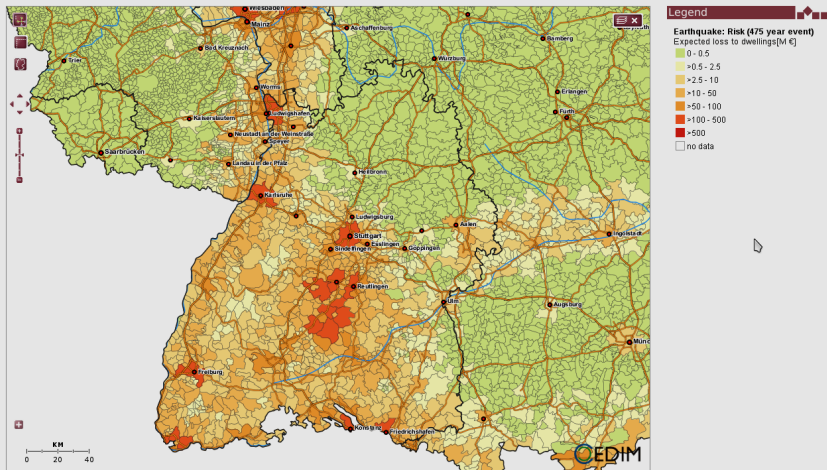
Legend

Earthquake: Hazard (475 year event)
Earthquake intensity (European
Macroseismic Scale)



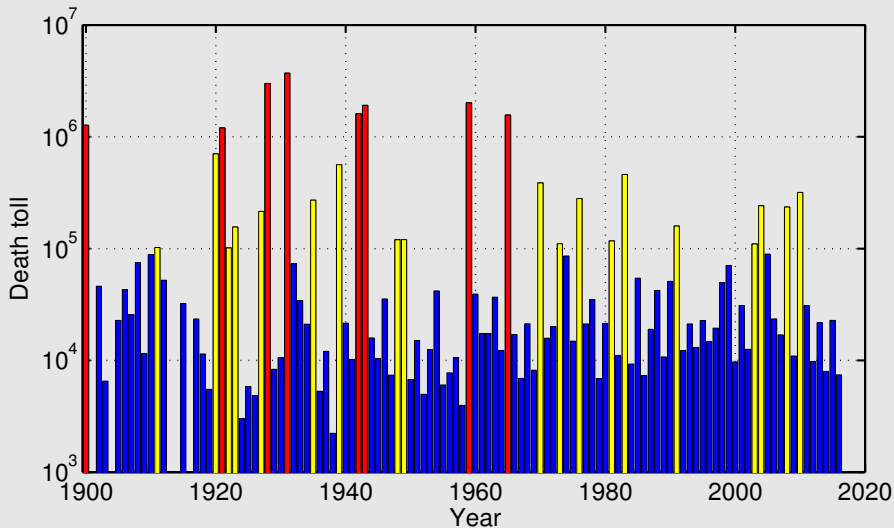
Source: CEDIM Risk Explorer (KIT / GFZ Potsdam)

Regional Earthquake Risk

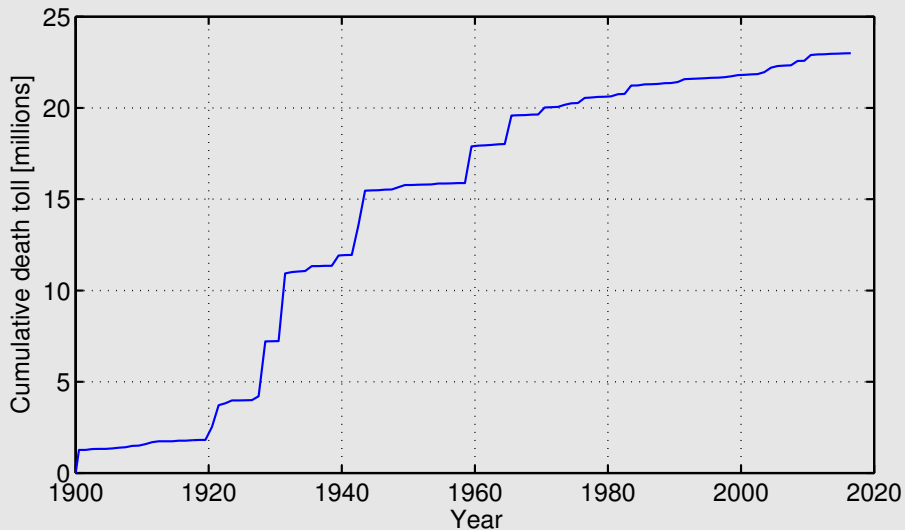


Source: CEDIM Risk Explorer (KIT / GFZ Potsdam)

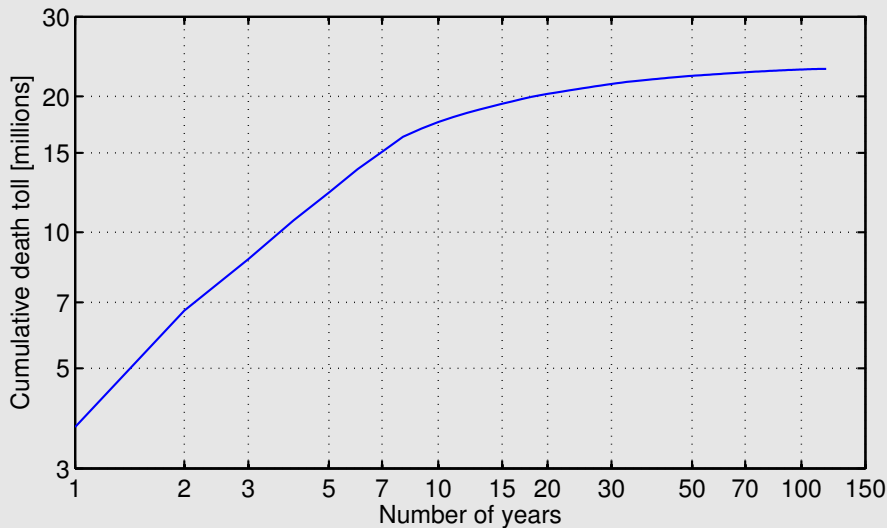
Worldwide Death Toll of all Geohazards since 1900



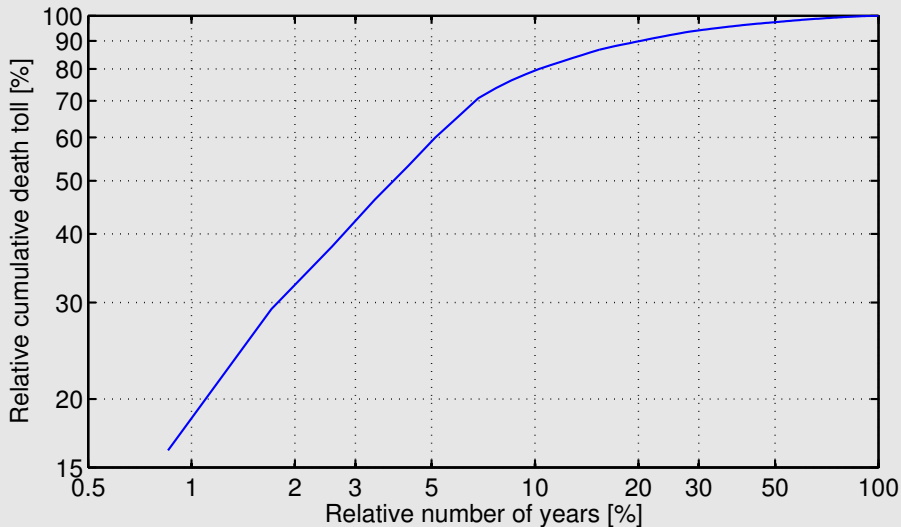
Worldwide Death Toll of all Geohazards Since 1900



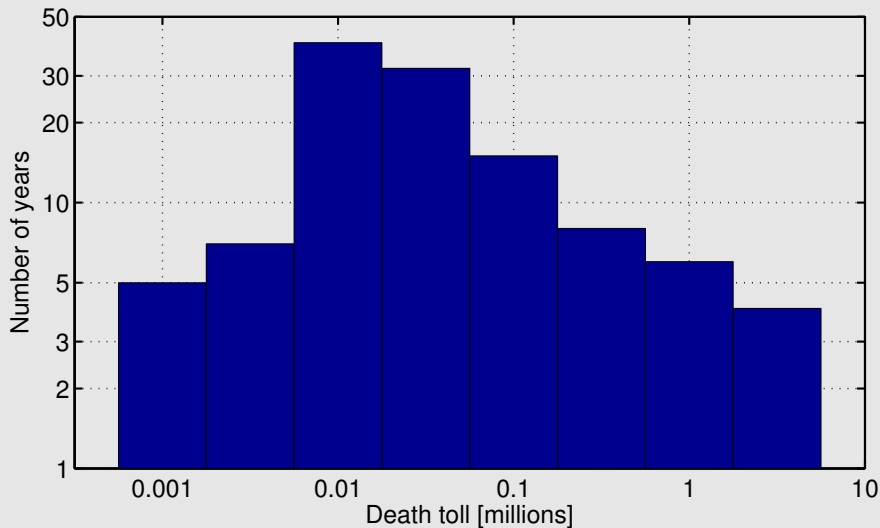
Pareto Diagram of all Geohazards Since 1900



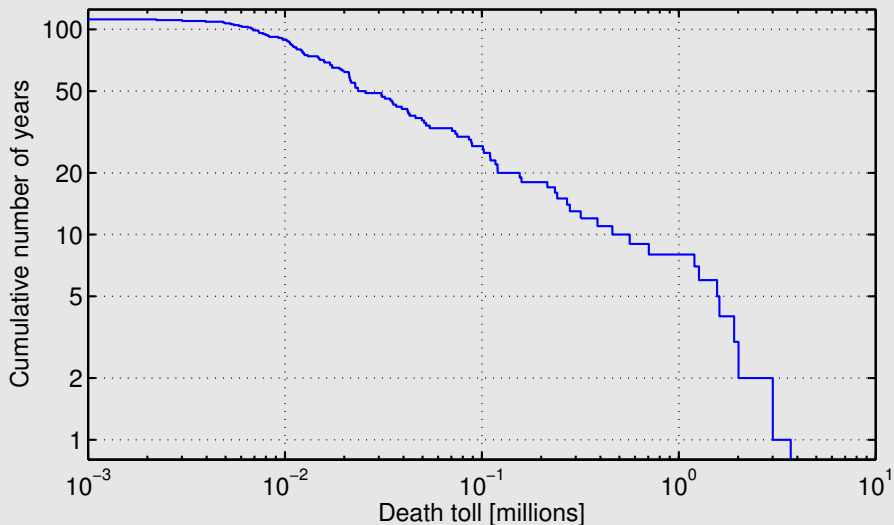
Pareto Diagram of all Geohazards Since 1900



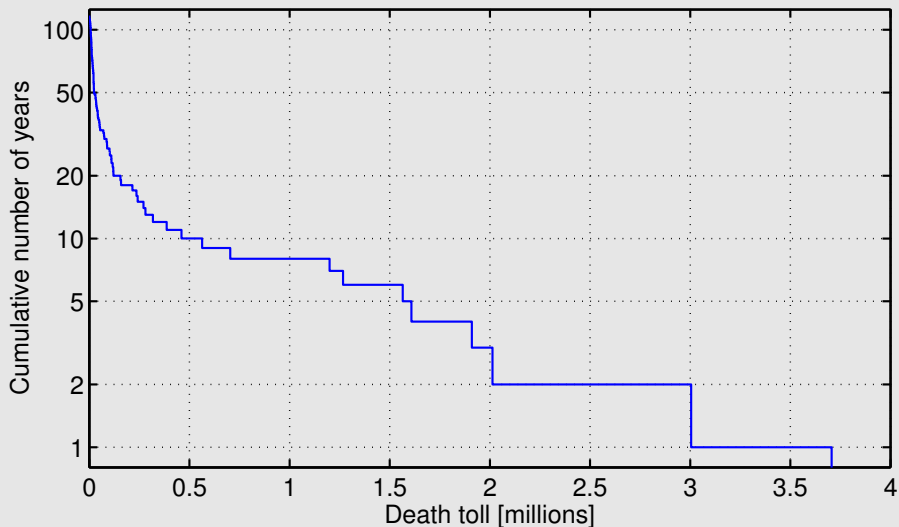
Binning



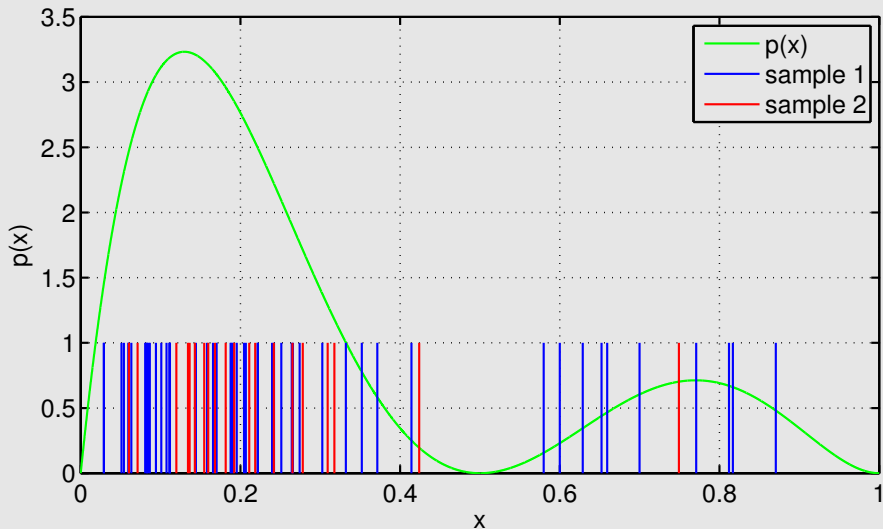
Cumulative Distribution



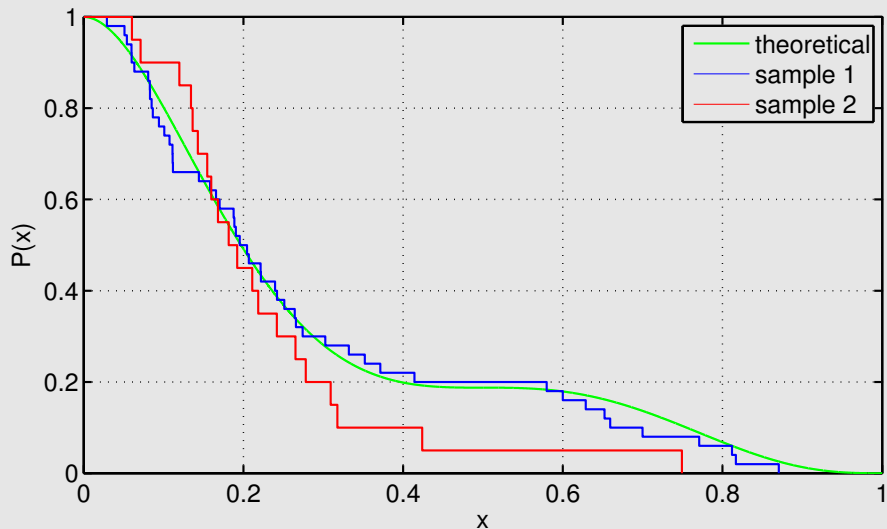
Cumulative Distribution



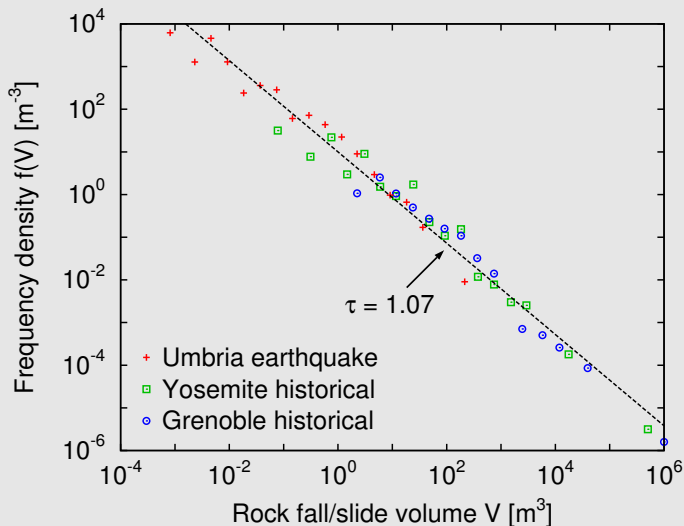
Kolmogorov-Smirnov Test



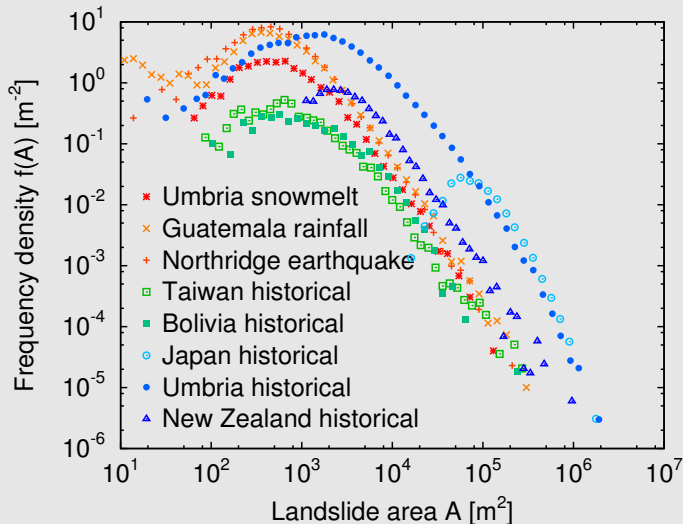
Kolmogorov-Smirnov Test



Frequency Density of Rockfalls

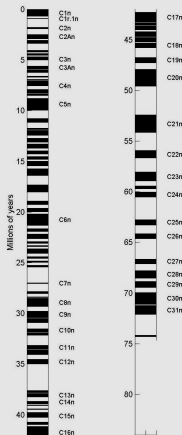


Frequency Density of Regolith Landslides

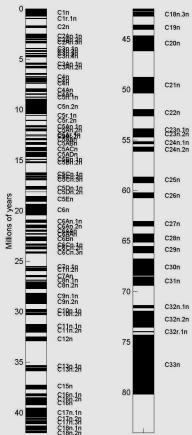


Magnetic Field Reversals

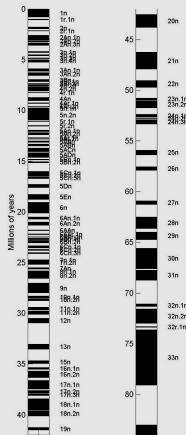
Heirtzler et al., 1968



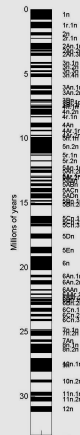
Kent and Gradstein, 1986



Cande & Kent 1995

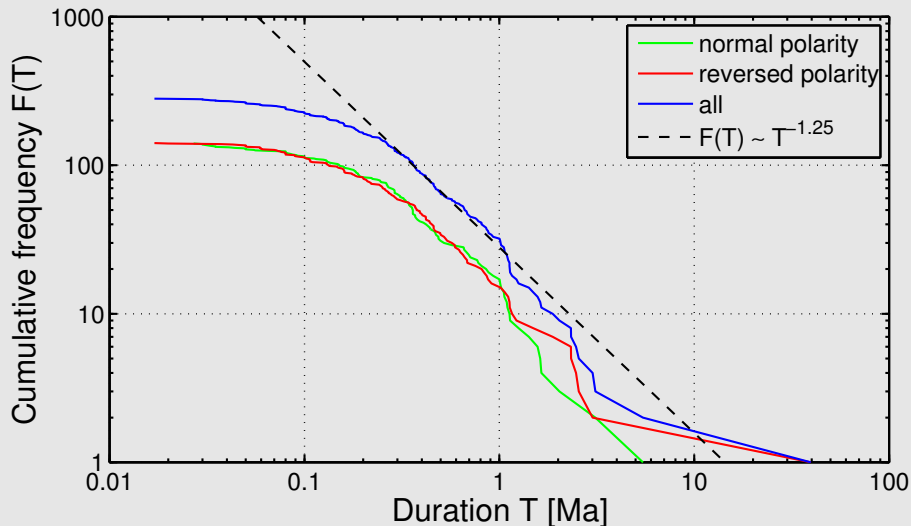


Huestis & Acton, 1997

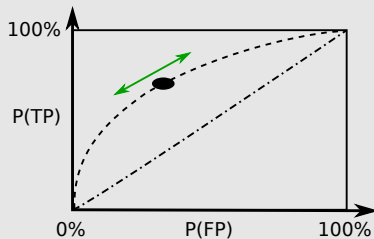
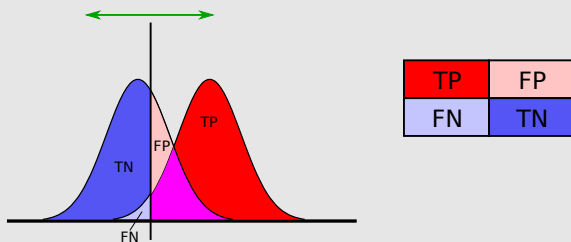


Quelle: Woods Hole Oceanographic Institution

Magnetic Field Reversals

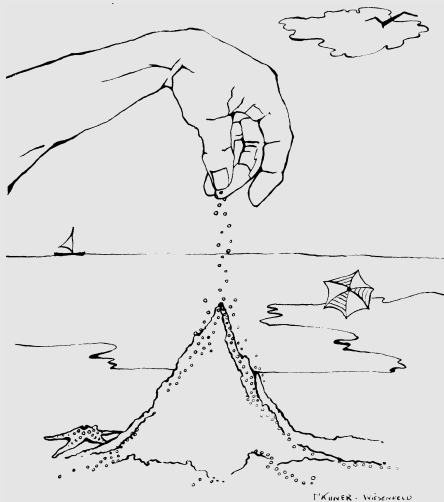


Receiver Operating Characteristic Curves



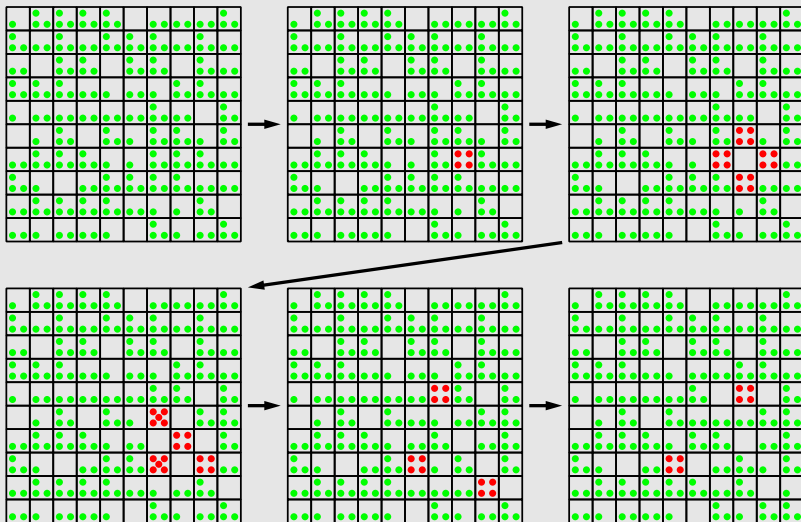
Source: Wikipedia, ©Sharpr

The Bak-Tang-Wiesenfeld (BTW) Model

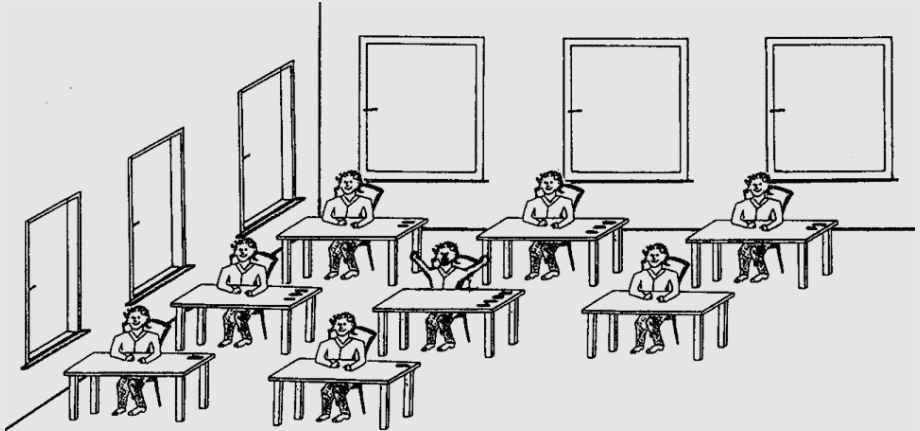


Source: Bak, How Nature Works

The Bak-Tang-Wiesenfeld (BTW) model



The Bak-Tang-Wiesenfeld (BTW) Model



Source: Bak, How Nature Works

The Olami-Feder-Christensen (OFC) Model

